



Two Striper.

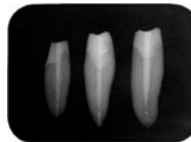
Snowpost® & Snowlight®

With their elastic modulus and flexural strength close to dentin, *Snowpost®* & *Snowlight®* posts follow the movement of the tooth, preventing tensions, fractures and other problems.

Made of zircon-rich glass fiber embedded in a resin matrix the posts ensure the perfect balance of strength and flexibility.



- Superior fatigue resistance
- Radiopaque and light transmitting
- Silanated for superior adhesive qualities
- Autoclavable up to 135°C / 275°F
- Bio-compatible and corrosion free
- Anatomical shape and 5* different diameters (0.8mm* - 1.6mm) **Snowlight® posts only*



Mechanical Properties		
	Snowpost®	Snowlight®
Elastic Modulus	45 GPa	52 GPa
Shear Strength	38 MPa	64 MPa

Snowpost® Kits			
C810001	Basic Kit : 50 assorted posts (1.0, 1.2, 1.4, 1.6) and 4 matching finishing drills		
C810002	Intro Kit : 20 assorted posts (1.0, 1.2, 1.4, 1.6) and 4 matching finishing drills		
Snowpost® Refills			
10 Posts/Pack		10 posts/pack with matching finishing drill	
C811001	Ø 1.0	C811005	Ø 1.0
C811002	Ø 1.2	C811006	Ø 1.2
C811003	Ø 1.4	C811007	Ø 1.4
C811004	Ø 1.6	C811008	Ø 1.6

Snowlight® Kits			
C830001	Basic Kit : 50 assorted posts (1.0, 1.2, 1.4, 1.6) and 4 matching finishing drills		
C830002	Intro Kit : 20 assorted posts (1.0, 1.2, 1.4, 1.6) and 4 matching finishing drills		
Snowlight® Refills			
10 Posts/Pack		10 posts/pack with matching finishing drill	
C831009	Ø 0.8		
C831002	Ø 1.2	C831006	Ø 1.0
C831003	Ø 1.4	C831007	Ø 1.2
C811004	Ø 1.6	C831008	Ø 1.4
C811004	Ø 1.6	C831009	Ø 1.6